

How do I create a dialup connection in Windows XP?

The instructions below will assist you in creating a dialup connection in Windows XP.

1. Open the **Control Panel** by clicking your Windows Start menu, button, then click Control Panel.

If you do not see the Control Panel, click on Settings and the Control Panel icon should be revealed. On the left-hand side of your Control Panel, you will see either Switch to Classic View or Switch to Category View. If you see Switch to Classic View, click it. Otherwise, you do not need to click anything here.

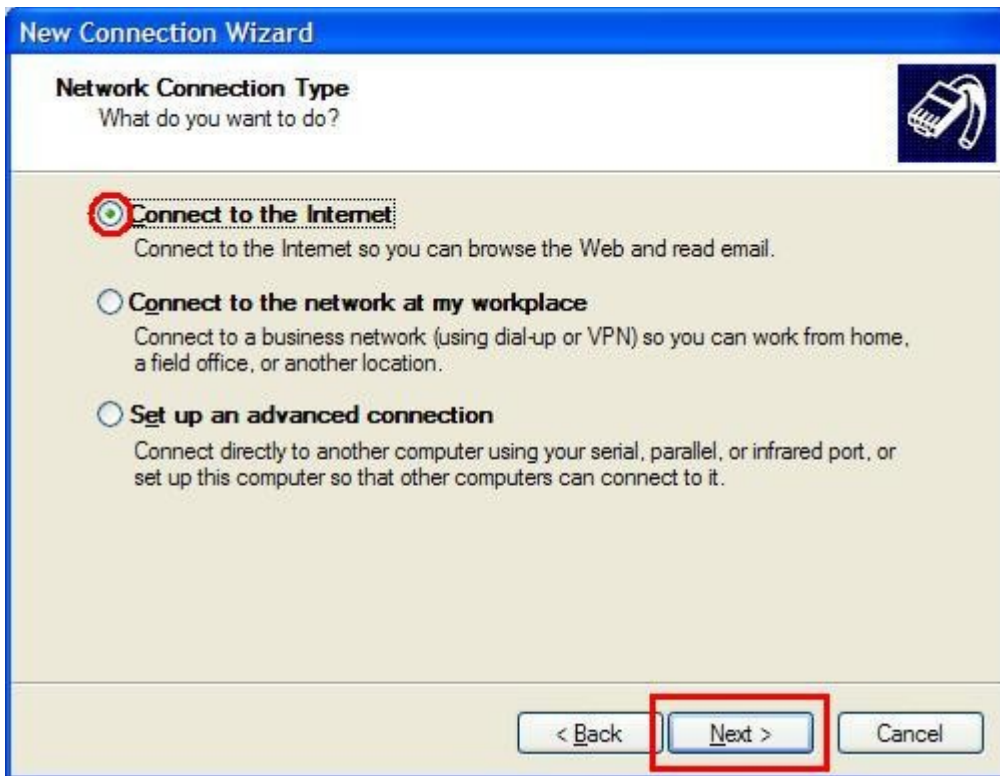
2. Double-click on the **Network Connections** icon.



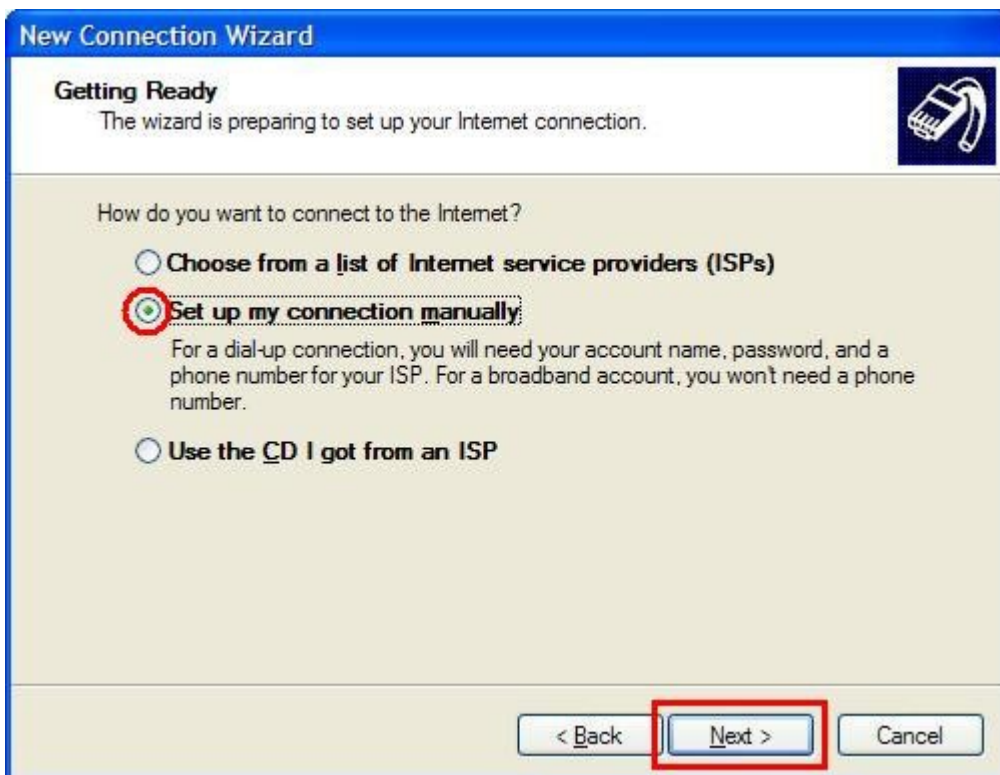
3. Click **Create a new connection** on the left-hand side of Network Connections. The New Connection Wizard will now start.



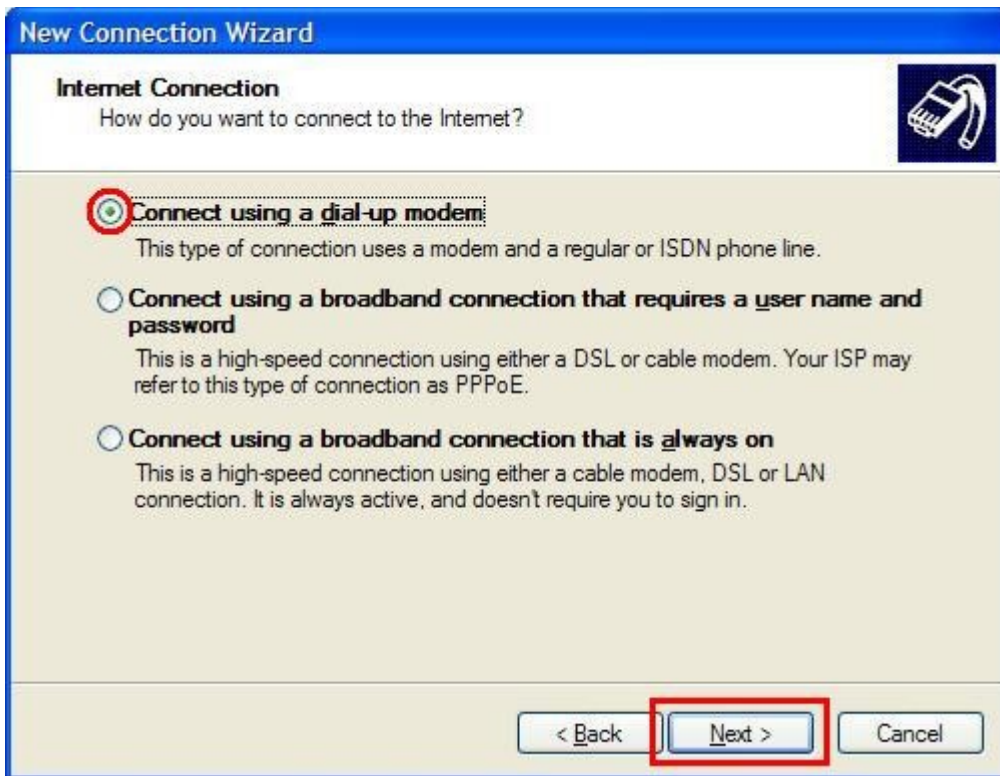
4. Click **Next**.



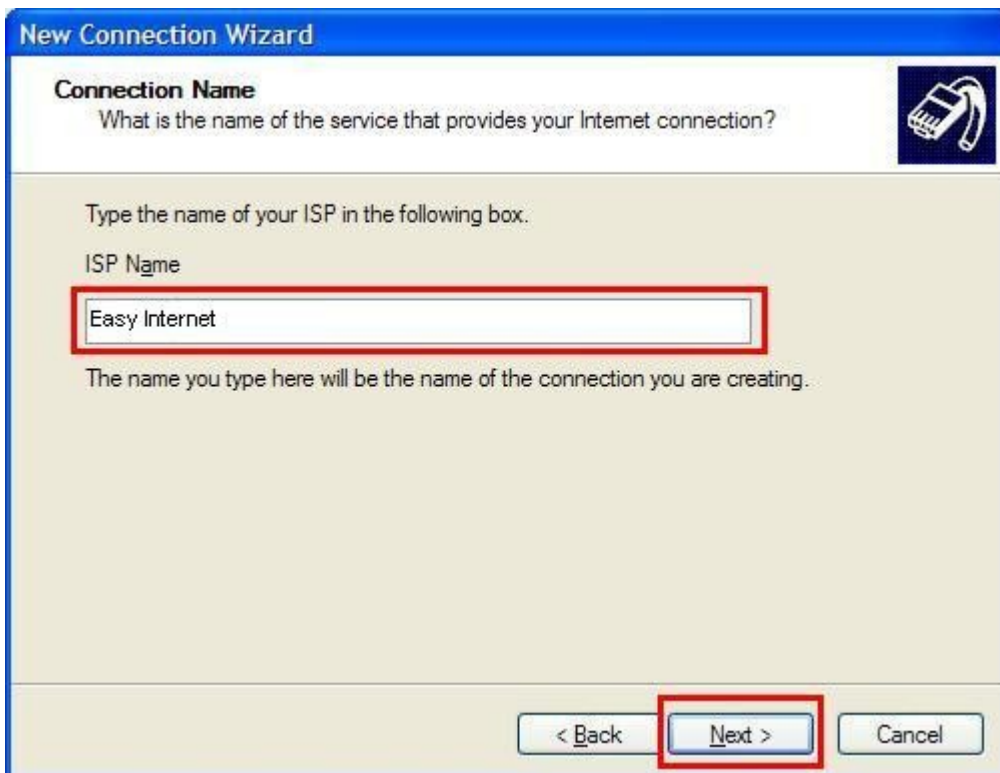
4. Select **Connect to the Internet** and click **Next**.



5. Select **Set up my connection manually** and click **Next**.



6. Select **Connect using a dial-up modem** and click **Next**.



7. Under **ISP Name**, type Easy Internet and then click **Next**.



New Connection Wizard

Phone Number to Dial
What is your ISP's phone number?

Type the phone number below.

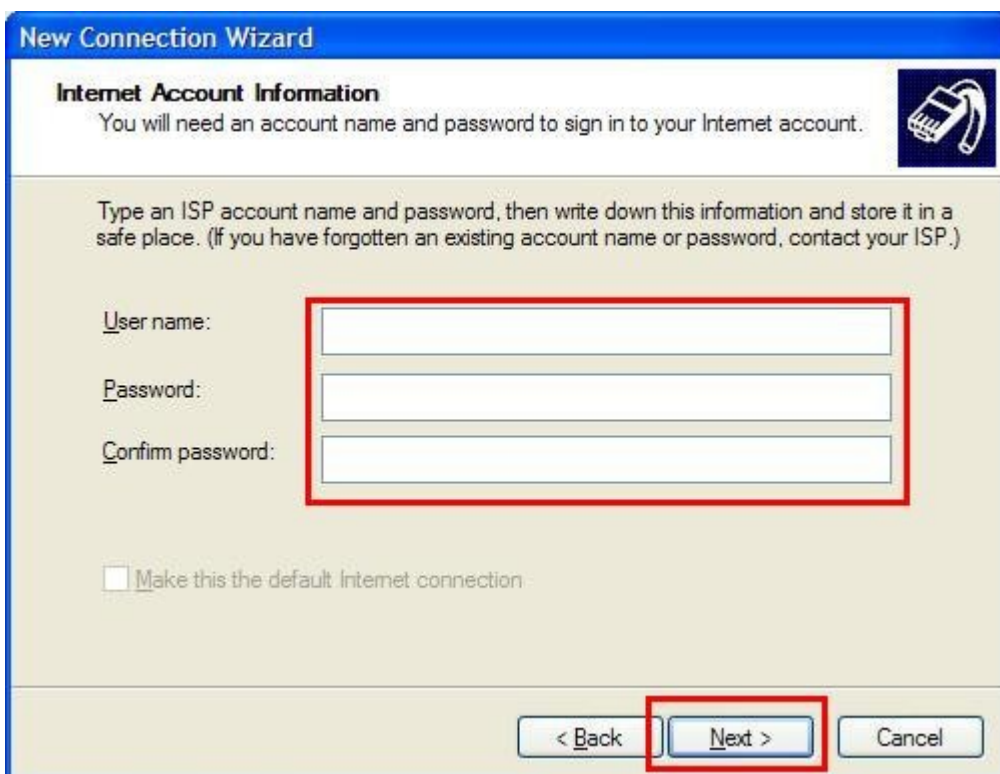
Phone number:
0198333416

You might need to include a "1" or the area code, or both. If you are not sure you need the extra numbers, dial the phone number on your telephone. If you hear a modem sound, the number dialed is correct.

< Back Next > Cancel

The image shows a Windows XP-style dialog box titled "New Connection Wizard". The current step is "Phone Number to Dial", which asks for the ISP's phone number. A text input field contains "0198333416". Below the field is a note about including area codes. At the bottom, there are three buttons: "< Back", "Next >", and "Cancel". The "Next >" button is highlighted with a red rectangle.

8. Under **Phone number**, type 0198333416 and then click **Next**.



New Connection Wizard

Internet Account Information
You will need an account name and password to sign in to your Internet account.

Type an ISP account name and password, then write down this information and store it in a safe place. (If you have forgotten an existing account name or password, contact your ISP.)

User name:
Password:
Confirm password:

Make this the default Internet connection.

< Back Next > Cancel

The image shows the next step in the "New Connection Wizard", titled "Internet Account Information". It asks for an account name and password. There are three text input fields for "User name:", "Password:", and "Confirm password:". Below these fields is a checkbox labeled "Make this the default Internet connection". At the bottom, there are three buttons: "< Back", "Next >", and "Cancel". The "Next >" button is highlighted with a red rectangle.

9. Type your username and password into the relevant text boxes, then click **Next**.



10. Click on **Add a shortcut to this connection to my desktop** and then click **Finish**.



You will now have a East Internet icon on your desktop. To connect to the internet, double-click the icon and press Connect.